

Summary of BOD treatment in selected aerated lagoon systems in Idaho

	Influent BOD mg/L			Effluent BOD mg/L			Percent BOD removal			BOD Removal <85%	
	Min.	Avg.	Max.	Min.	Avg.	Max.	Min.	Avg.	Max.	%	#/36
Bonnars Ferry	54.0	220.6	307.0	12.4	36.5	64.7	0.0%	81.2%	92.9%	52.8%	19
Buhl	429.6	675.6	1175.8	12.5	34.0	73.0	90.5%	94.9%	97.8%	0.0%	0
Driggs	81.4	327.2	1050.0	10.0	39.0	282.0	21.7%	86.4%	97.6%	31.4%	11
Filer	21.2	270.0	848.0	8.3	20.2	36.0	10.4%	77.3%	97.8%	33.3%	3
Fruitland PR	94.0	130.0	183.0	2.5	10.3	43.0	74.7%	92.3%	97.9%	11.1%	4
Fruitland SR	306.0	505.1	717.0	16.7	29.2	43.4	88.7%	94.0%	97.0%	0.0%	0
Homedale	58.0	258.0	1170.0	6.0	23.3	60.0	56.9%	88.1%	98.9%	25.0%	9
Middleton	73.0	174.7	361.0	9.0	35.1	80.0	61.4%	80.7%	91.1%	72.2%	26
Parma	61.0	183.3	305.0	3.0	11.3	44.0	76.5%	93.2%	98.9%	8.3%	3
Rigby	51.0	181.2	355.0	3.2	18.4	43.3	57.1%	88.3%	98.1%	22.2%	8
Salmon	19.3	77.9	141.0	3.0	6.6	25.0	63.4%	89.8%	97.2%	19.4%	7
Shelley	67.8	123.9	215.0	12.0	51.9	134.0	8.7%	57.0%	89.5%	91.7%	33
St. Anthony	81.0	267.9	990.0	2.0	14.2	95.0	48.9%	92.2%	99.6%	16.7%	6
Star	53.0	133.7	318.0	3.0	8.4	16.0	81.1%	91.9%	99.1%	13.9%	5
Wilder	90.0	255.2	408.0	3.0	12.6	43.0	77.6%	94.7%	98.7%	2.8%	1
Averages	102.7	252.3	569.6	7.1	23.4	72.2	54.5%	86.8%	96.8%	26.7%	9

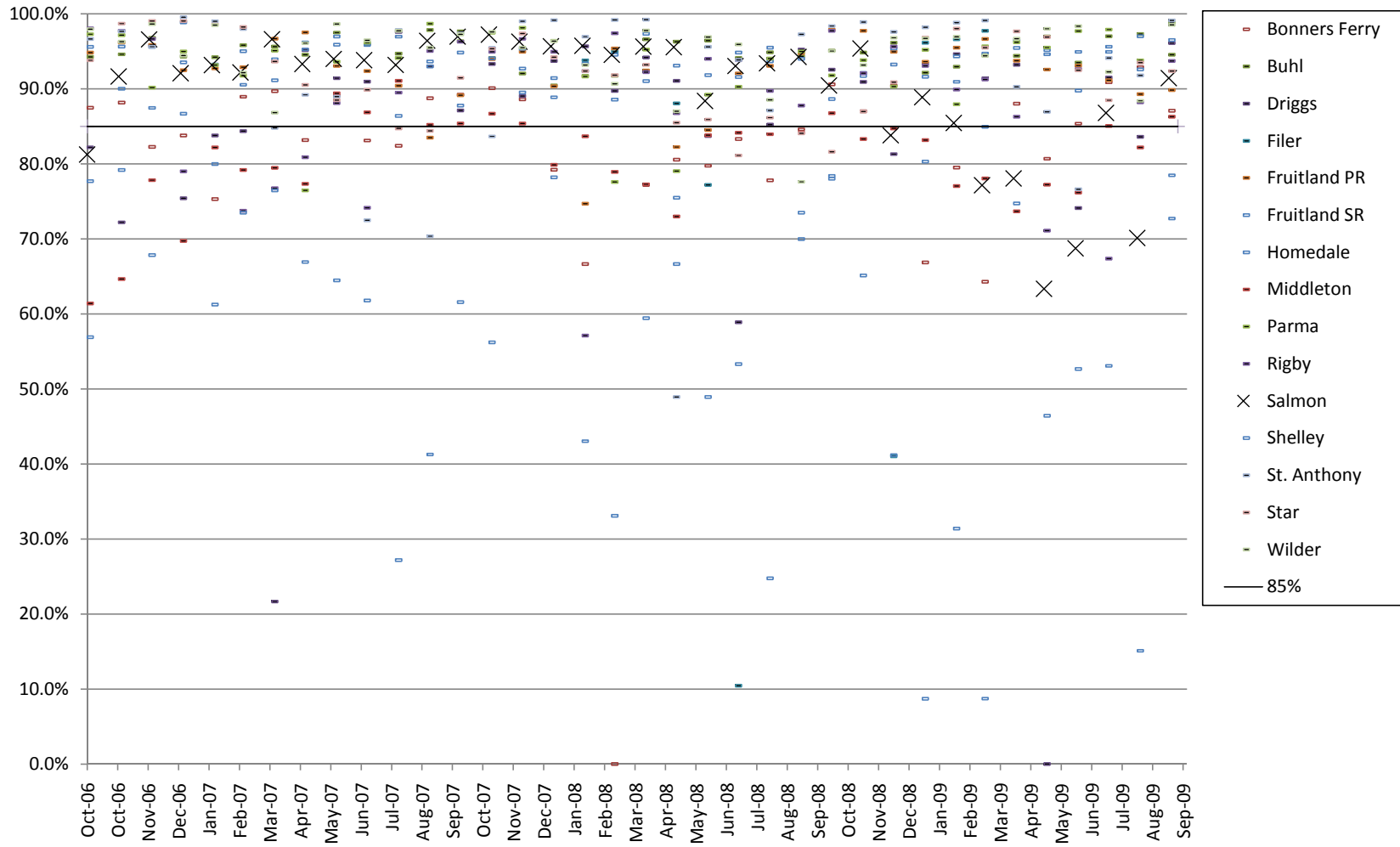


Summary of TSS treatment in selected aerated lagoon systems in Idaho

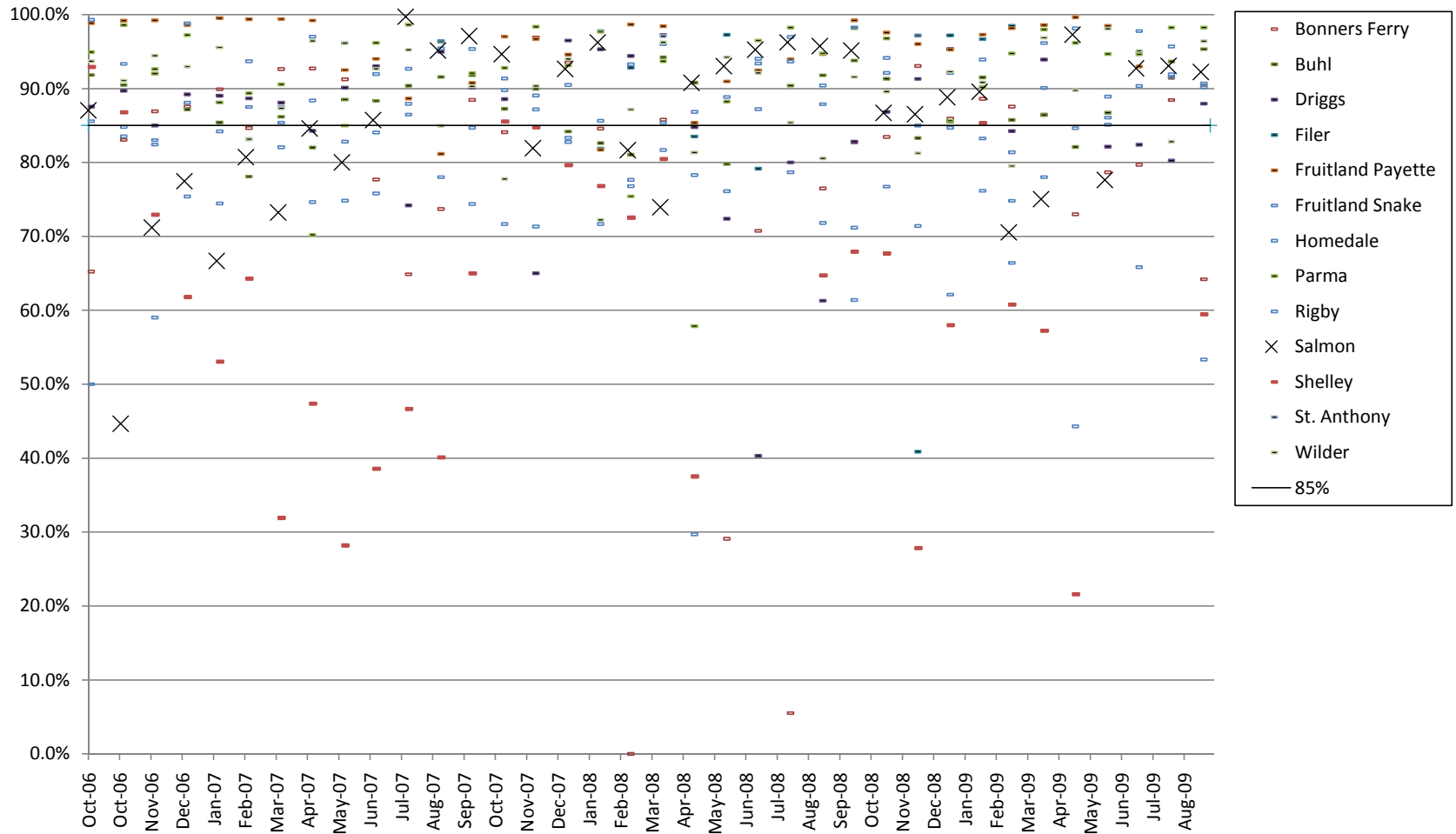
	Influent TSS mg/L			Effluent TSS mg/L			Percent TSS removal			TSS Removal <85%	
	Min.	Avg.	Max.	Min.	Avg.	Max.	Min.	Avg.	Max.	%	#/36
Bonnars Ferry	56.4	258.6	937.0	9.4	42.3	83.6	0.0%	77.3%	96.9%	55.6%	20
Buhl	313.4	413.9	1022.8	15.4	47.4	84.8	78.1%	88.3%	95.3%	22.2%	8
Driggs	45.0	261.4	854.0	6.0	29.3	66.0	40.3%	85.1%	97.2%	37.1%	13
Filer	27.4	505.7	1370.0	8.0	30.0	54.0	40.9%	85.3%	98.5%	44.4%	4
Fruitland PR	106.0	186.3	363.0	1.0	9.7	38.0	81.2%	95.0%	99.6%	5.6%	2
Fruitland SR	141.0	180.3	270.0	14.5	36.8	75.0	62.1%	79.6%	91.5%	72.2%	26
Homedale	66.0	257.0	1580.0	3.0	25.0	90.0	29.7%	84.5%	98.8%	33.3%	12
Middleton	-	-	-	18.0	38.1	93.0	-	-	-	-	-
Parma	75.0	187.1	408.0	3.0	15.0	102.0	57.9%	92.2%	98.6%	11.1%	4
Rigby	56.0	159.5	438.0	1.8	17.3	42.3	44.3%	87.2%	99.3%	27.8%	10
Salmon	21.3	95.1	698.0	2.0	11.2	34.0	44.6%	85.6%	99.7%	38.9%	14
Shelley	43.0	97.9	370.4	13.0	43.6	96.0	-98.4%	41.4%	92.9%	88.9%	32
St. Anthony	-	-	-	1.5	15.4	69.4	-	-	-	-	-
Star	-	-	-	15.0	9.4	22.0	-	-	-	-	-
Wilder	64.0	186.3	442.0	3.0	19.3	86.0	72.2%	89.7%	98.1%	25.0%	9
Averages	84.5	232.4	729.4	7.6	26.0	69.1	37.7%	82.6%	97.2%	38.5%	13



BOD Percent Removal in Idaho Lagoon Systems

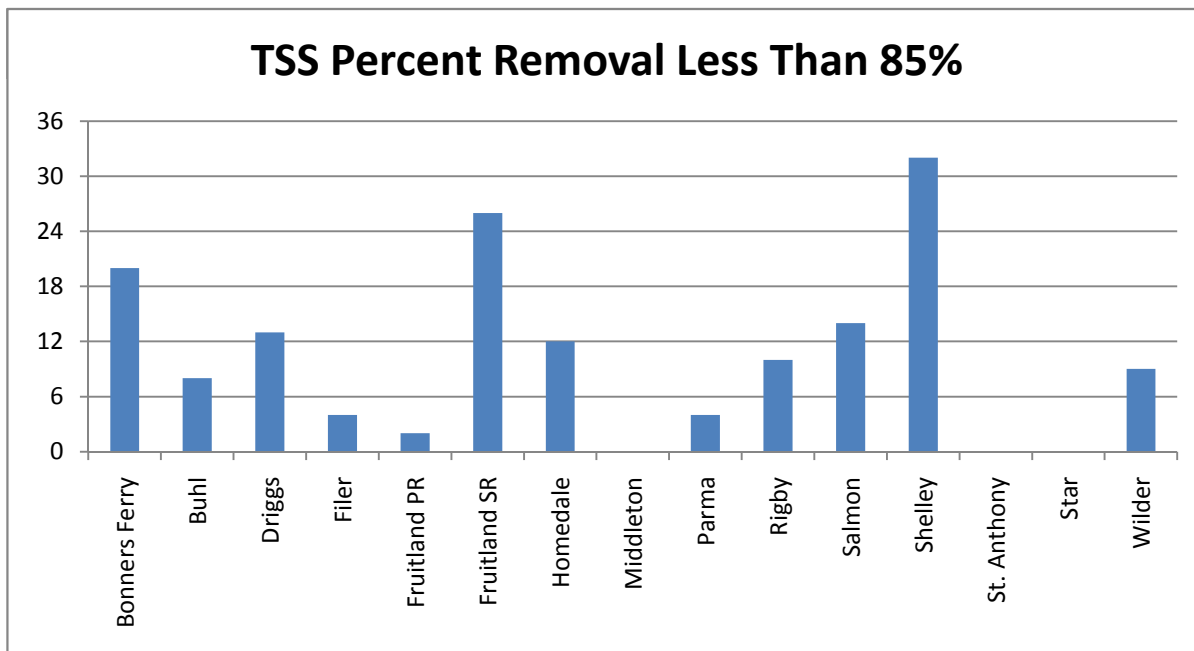
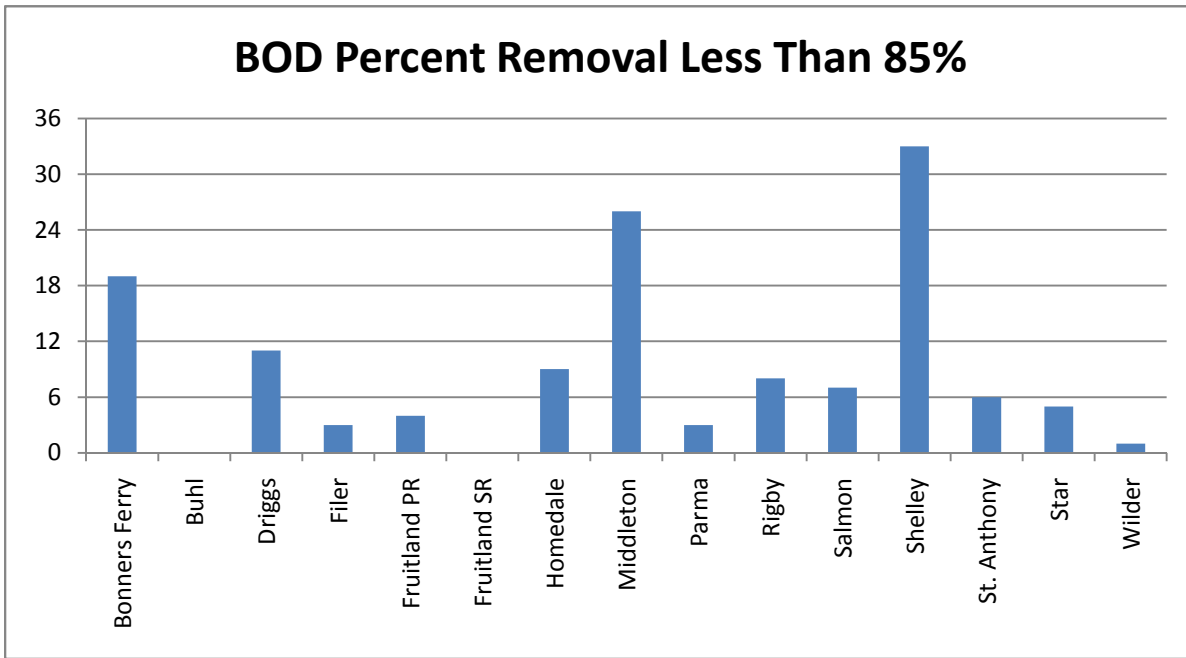


TSS Percent Removal in Idaho Lagoon Systems



Summary of rate of failure of selected Idaho lagoon systems to achieve 85% removal.

The following charts show the number out of the 36 sample months in the analyzed period in which removal of BOD and TSS was less than 85%.



City	NPDES Permit	Aerated		Valid Data	System Description	Avg. flow	Receiving Water	Notes
		Lagoon	Est. Pop.					
Page WWTP	ID002130-0	X	13750	no	aerated lagoons, aeration, stabilization pond, chlorination	2.41	South Fork Coeur d'Alene River	Multiple Treatment works
Burley	ID002009-5	X	9578	no	aeration lagoons, stabilization, microscreen, chor/dechlor	1.3	Milner Pool to Snake River	New Mechanical
Buhl	ID002066-4	X	4150	yes	3 aerated lagoons, 2 facultative lagoons, chlorination/dechlor	0.54	East Fork Mud Creek	New Ox ditch 2010
Shelley	ID002013-3	X	3812	yes	lagoons & UV	0.34	Snake River	
Fruitland, Payetter River WWTP	ID002119-9	X	3800	yes	3C Aerated lagoon	0.35	Payette River	
Fruitland, Snake River WWTP	ID002033-8	X	3800	yes	4C stabilization ponds	0.5	Snake River	
St. Anthony	ID002040-1	X	3342	yes	grit, screen, 4c aerated lagoon, chlor	0.43	Henry's Fork	
Bonnars Ferry	ID002022-2	X	3000	yes	4c lagoon, chlorine	0.385	Kootenai River	
Rigby	ID002001-1	X	3000	yes	aerated lagoons,	0.53	Dry Bed Canal to Snake River	
Salmon	ID002000-1	X	3000	yes	aerated lagoons, UV	1.57	Salmon River	
Montpelier	ID002558-5	X	2800	no	3 facultative lagoons, chlorination	0.36	Bear River	
Homedale	ID002042-7	X	2500	yes	lagoons & chlorination	0.25	Snake River	
Driggs/Victor	ID002014-1	X	2500	yes	4c facultative aerated lagoons, chlorination	0.38	Woods Creek to Teton River	
McCall	ID002023-1	X	2084	no	3C Aerated lagoon, sand filtration, chlorination	0.73	land application/North Fork Payette River	
Middleton	ID002183-1	X	2000	yes	4c aeration, chlorination	0.3	Boise River	
Riverside	ID002450-3	X	1800	no	Lagoons & Chlorination	0.18	Clearwater River	
Star	ID002359-1	X	1795	yes	3c aerated lagoon, chlorination	0.33	Lawrence-Kennedy Canal to Boise River	
Parma	ID002177-6	X	1771	yes	Lagoons & Chlorination	0.32	Sandhollow Creek	
Filer	ID002006-1	X	1620	yes	secondary & disinfect, summer land app	0.059	Cedar Draw Creek (trib to Snake River)	
Glenns Ferry	ID002200-4	X	1600	no	Lagoons & rapid infiltration	0.35	Snake River	
Wilder	ID002026-5	X	1450	yes	3 aerated lagoons, sand filtration, chlorination	0.17	Wilder Ditch Drain (trib of Lower Boise River)	
New Plymouth	ID002038-9	X	1400		waste stabilization lagoons	0.4	Payette River	
Shoshone	ID002372-8	X	1398		lagoons & chlorination	0.09	Little Wood River	
Ashton	ID002371-0	X	1129	yes	4c facultative aerated lagoon	0.16	unnamed stream to Henry's South Fork/land application	
Cascade	ID002316-7	X	1000		Lagoon & disinfection through soil column	0.119	North Fork Payette River	
Potlatch/Onaway	ID002250-1	X	994		lagoons & chlorination	0.12	Palouse River	
Plummer	ID002278-1	X	990		aerated lagoons, sand filtration, chlorination	0.1	Plummer Creek	
Genesee	ID002012-5	X	946		lagoons	0.1	Cow Creek	
Cottonwood	ID002184-9	X	944		facultative lagoons & chor/dechlor	0.48	Cottonwood Creek	land app in summer (trees)
Marsing	ID002120-2	X	898		lagoons & chlorination	0.01	Snake River	
Firth/Basalt	ID002498-8	X	860		lagoons & UV	0.4	Snake River	
Council	ID002008-7	X	815		aerated lagoons & chlorination	0.34	Weiser River	
Inkom	ID002024-9	X	800		aerated lagoons & chlorination	0.076	Portneuf River	
Southside W&S District	ID002804-5	X	750		aerated lagoons & chlorination	0.054	Pend Orielle River/ summer land app	
Horseshoe Bend	ID002102-4	X	702		screen, lagoons, UV	0.07	Payette River	
Santa-Fernwood Sewer District	ID002284-5	X	700		stabilization pond & chlorination	0.14	St. Maries River	
Kooskia	ID002181-4	X	675		aerated lagoon w/ settling, chlorination, polishing	0.11	South Fork Clearwater River	
Hagerman	ID002594-1	X	660		2 facultative lagoons chlorination	0.15	Snake River	
Troy	ID002360-4	X	653		lagoons, clarifier, chlorination	0.11	West Fork Little Bear Creek	
Smelterville	ID002011-7	X	651		3 aerated lagoons, chlorination	0.18	South Fork Coeur d'Alene River	
Franklin	ID002556-9	X	641		lagoons & chlorination	0.02	Cub River	
Roberts	ID002691-3	X	627		lagoons & chlorination	0.03	Roberts Slough to Snake River	
New Meadows	ID002315-9	X	576		Lagoons & Chlorination	0.1	Little Salmon River	
Mackay	ID002302-7	X	566		aerated lagoons & chlorination	0.065	Big Lost River	
Ririe	ID002617-4	X	560		Lagoons & UV	0.1	Dry Bed Canal/Enterprise Canal	
Craigmont	ID002128-8	X	556		2 lagoons, chlorination, intermittent sand filtration	0.15	John Dobbs Creek to North Fork Lawyers Creek	
Deary	ID002078-8	X	552		Lagoons & Chlorination	0.2	Mount Deary Creek to Big Bear Creek	
Lava Hot Springs	ID002182-2	X	520		lagoons, chlorination	0.13	Portneuf River	going land application
Culdesac	ID002449-0	X	506		facultative lagoons, chlorin, sand filters	0.05	Lapwai Creek	
Carey Water & Sewer District	ID002574-7	X	500		Lagoons & Chlorination	0.03	Little Wood River	
Worley	ID-002271-3	X	500		aerated lagoons & chlorination	0.047	Rock Creek	
Cambridge	ID002180-6	X	480		lagoons & chlorination	0.088	Weiser River/Rush Creek	
Kootenai-Ponderay SD	ID002122-9	X	441		aeration lagoons, chlorine, sand filter	0.319	Boyer Slough to Pend Orielle Lake	
Weippe	ID002035-4	X	416		aerated lagoons, chlorination	0.424	Jim Ford Creek	
Richfield	ID002121-1	X	412		lagoons & chlorination	0.02	Little Wood River	
Fairfield	ID002438-4	X	395		lagoons & rapid infiltration	0.165	unknown ditch to Soldier Creek	

Kendrick	ID002455-4	X	369	lagoons & chlorination	0.03	Estuary to Potlatch River
Rockland	ID002204-7	X	316	lagoons	0.062	Rock Creek
Bovill	ID002286-1	X	305	lagoons & chlorination	0.053	Potlatch River
Harrison	ID002199-7	X	275	septic tanks to aerated lagoons, filtration, chlorination	0.0006	Anderson Slough
Paul	ID002177-6	X	230	aerated lagoon, polishing,UV	0.055	Minidoka Irrigation Canal (periodic discharge)
Stites	ID002034-6	X	226	lagoon cell, chlorination	0.061	South Fork Clearwater River
Slate Creek Ranger Station	ID002073-7	X	150	lagoon & chlorination	0.0004	Salmon River near Slate Creek
Elk River	ID002036-2	X	150	lagoons & chlorination	0.02	Elk Creek
Tensed	ID002510-1	X	123	lagoons & chlorination	0.03	Hangman Creek
Viola	ID002631-0	X	120	stabilization lagoons, chlorination	0.011	Fourmile Creek
Country Home Mobile Park	ID002530-5	X	78	Lagoons & Chlorination	0.001	unnamed tributary to S.F. Palouse River
Elk City	ID002201-2	X		aerated stabilization pond, chlorination	0.057	Big Elk Creek
Emmett	ID002031-1		30000 d	activated sludge, clarification, solids, UV	10	Payette River lagoons had problems w/ I/I, TSS, Algae
Meridian	ID002019-2		64642	screen, clarification, biotower, activated sludge, clarifier, sand filter, U	7	Five Mile Creek/Boise River
Nampa	ID002206-3		51867	mechanical activated sludge	6.6	Indian Creek
Pocatello	ID002178-4		51466	activated sludge	7.6	Portneuf River
Idaho Falls	ID002125-1		50730	shredder, grit, clarifier, biofilter tower, aeration basins, clarifier, chlor/dechlor	10.3	Snake River
Caldwell	ID002150-4		39889	screen, grit, clarifier, biotower, clarifier, sand filter, chlorination + improven	8.48	Boise River
Twin Falls	ID002127-0		38305	screen, grit, clarification, biotower, aeration basin, clarifiers, UV, solids	7.13	Snake River Treats Kimberly WW also
Coeur d'Alene	ID002285-3		35514	activated sludge	3	Spokane River
Lewiston	ID002653-1		30904	screen, grit, clarification, activated sludge, clarification, UV, solids	4.42	Clearwater River
Moscow	ID002149-1		21291	comminution, sedimentation, trickling filters, clarification, aeration, chor/dechl	2.5	Paradise Creek
Rexburg	ID002381-7		20000	screen, grit, ox ditch, clarification, chlor/dechlor	1.65	South Fork Teton River
Post Falls	ID002585-2		17247	screen, grit, nutrient removal, clarification, chor/dechlor	1.8	Spokane River
Blackfoot	ID002004-4		10000	activated sludge mechanical	5.1	Snake River
Jerome	ID002016-8		7780	MBR		
Payette	ID112067-2		7054	screen, grit, oxidation ditch, clarification, chlor	2.4	Payette River
Sandpoint	ID002084-2		6835	clarification, activated sludge, 2 clar, chlorination	1.8	Pend Orielle River
Kuna	ID002835-5		5382	MBR	3.5	Indian Creek
Hailey	ID002030-3		5000	screen, grit, SBR, filter, UV, solids	1.6	Big Wood River
Weiser	ID002029-0		4900	screen, activated sludge, clarification, chlorination	1.67	Snake River
Preston	ID002250-1		4682	scree, grit, ox ditch, clarification, UV	1.2	Worm Creek to Cub River
Soda Springs	ID002081-8		3381	grit, comminutor, clarifier, biofilter tower, clarifier, chlorination, solids	1.7	Bear River
Grangeville	ID002003-6		3228	extended aeration, chlorination	0.7	Threemile Creek to S. Fork Clearwater
Ketchum	ID0020281		3003	screen, grit, extended aeration activated sludge, clarification, chor/dechlor,	2.48	Big Wood River
Heyburn	ID002094-0		2899	activated sludge, clarification, solids, Uv	0.32	Snake River
Orofino	ID002015-0		2885	screen, grit removal, oxidation ditch, clarifiers, gas chlorination	0.5	Clearwater River
St. Maries	ID002279-9		2652	no information		St. Joe River
Kamiah	ID002800-2		2450	scree, aeration, clarifier, UV, solids	0.613	Middle Fork Clearwater River
Aberdeen	ID002017-6		1800	BioFiltration	0.43	American Falls Reservoir
Priest River	ID002080-0		1754	screen, grit, aeration, clarification, chlorination	0.325	Pend Orielle River
Grace	ID002382-5		990	Oxidation ditch, chlorination	0.05	Grace Dam Impoundment on Bear River Reservoir
Hansen	ID002244-6		970	oxidation ditch, clarifier, chlorination, solids	0.084	unnamed agricultural canal
Pierce/Judgetown	ID002020-6		780	package plant, chlorination	0.19	Orofino Creek to Clearwater River
Jug Mountain Ranch	ID002802-9		700	SBR package plant, sand filter, UV	0.05	Cold Creek (trib of Boulder Creek)
Juliaetta	ID002376-1		500	activated sludge, eff polishing, chlorination	0.036	Potlatch River
Nez Perce	ID002039-7		500	aerated lagoons & chlorination	0.09	Long Hollow Creek
Notus	ID002101-6		458	facultative lagoons - stabilization	0.056	Conway Gulch (periodic discharge)
Riggins	ID002093-1		435	activated sludge, clarification, chlorination	0.04	Salmon River
North Idaho Correctional Facility	ID02588-7		357	lagoons, chlorination, settling	0.03	unnamed creek to Lawyer Creek then Clearwater River
Dover	ID002769-3		342	mechanical aeration & UV	0.029	Pend Orielle River
Winchester	ID002018-4		300	activated sludge, UV	0.025	Lapwai Creek
The Meadows LLC	ID002442-2		250	screen,comminutor, clarifier, UV, sludge holding	0.02	Big Wood River
Ahsahka Water & Sewer District	ID002522-4		150	Oxidation ditch, clarifier, chlorination	0.012	Clearwater River
Elk Valley Subdivision	ID002797-9		78	SBR, sand filters, UV	0.0093	South Fork Boise River Featherville
Clarkia Water and Sewer District	ID002507-1		75	septic tanks to sand filtration & chlorination	0.016	St. Maries River
Fenn Ranger Station	ID002070-1		50	Oxidation ditch, clarifier, chlorination	0.006	Selway River
Pinehurst	Page WWTP					

Mountain Home AFB	ID002764-2		SBR chlor/dechlor	0.85	Canyon Creek to Snake River	
Hayden Area RSD	ID002659-0		screen, grit, oxidation ditch, clarifiers, chlorination, solids	0.556	Spokane River/summer land app	Rathdrum
Boise - West Boise	ID002398-1		activated sludge mechanical	24	Boise River	
Mullan	ID002129-6		extended aeration, clarifier	0.276	South Fork Coeur d'Alene River	SFCDA River Sewer District
American Falls	ID002075-3		activated sludge	0.45	Snake River	
Boise - Lander Street	ID002044-3		screen, grit, 1&2 clarifiers, activated sludge, nit/denit, UV	15	Boise River	
Gooding	ID002002-8		screen, grit, oxidation ditch, clarification, chor/dechlor	0.32	Little Wood River/summer land app	
Albion	-	L				
Arco	-	L				
Bloomington	-	L				
Challis	-	L				
Clark Fork	-	L				
Downey	-	L				
Dubois	-	L				
Eden	-	L				
Malad	-	L				
McCammon	-	L				
Melba	-	L				
Menan	-	L				
Moyie Springs	-	L				
Newdale	-	L				
Paris	-	L				
Spirit Lake	-	L				
Tetonia	-	L				
Wendell	-	L				

Bonnors Ferry

	BODInfl	BODEff	BOD %rem	TSS Inf	TSS Eff	TSS % rem
Oct-06	253.0	31.6	87.5%	128.0	44.5	65.2%
Nov-06	164.0	19.4	88.2%	183.0	31.0	83.1%
Dec-06	154.0	27.3	82.3%	168.0	22.0	86.9%
Jan-07	260.0	42.1	83.8%	265.0	33.0	87.5%
Feb-07	209.0	51.6	75.3%	228.0	23.0	89.9%
Mar-07	299.0	33.0	89.0%	267.0	41.0	84.6%
Apr-07	238.0	24.5	89.7%	285.0	21.0	92.6%
May-07	220.0	37.0	83.2%	508.0	37.0	92.7%
Jun-07	294.0	32.1	89.1%	937.0	82.0	91.2%
Jul-07	208.0	35.1	83.1%	242.0	54.0	77.7%
Aug-07	228.0	40.1	82.4%	238.0	83.6	64.9%
Sep-07	267.0	30.0	88.8%	213.0	56.0	73.7%
Oct-07	248.0	26.7	89.2%	581.0	67.0	88.5%
Nov-07	256.0	25.3	90.1%	264.0	42.0	84.1%
Dec-07	182.0	20.7	88.6%	303.0	9.4	96.9%
Jan-08	300.0	62.3	79.2%	649.0	42.2	93.5%
Feb-08	194.0	64.7	66.6%	282.0	43.5	84.6%
Mar-08	54.0	54.0	0.0%	56.4	56.4	0.0%
Apr-08	182.0	41.5	77.2%	218.0	31.0	85.8%
May-08	230.0	44.7	80.6%	271.0	41.2	84.8%
Jun-08	205.0	41.5	79.8%	99.0	70.2	29.1%
Jul-08	219.0	36.5	83.3%	201.0	58.8	70.7%
Aug-08	220.0	48.8	77.8%	87.2	82.4	5.5%
Sep-08	271.0	41.7	84.6%	245.0	57.6	76.5%
Oct-08	307.0	28.8	90.6%	248.0	42.8	82.7%
Nov-08	261.0	33.9	87.0%	244.0	40.4	83.4%
Dec-08	244.0	23.3	90.5%	242.0	16.8	93.1%
Jan-09	192.0	63.6	66.9%	182.0	25.6	85.9%
Feb-09	211.0	43.2	79.5%	237.0	27.0	88.6%
Mar-09	149.0	53.2	64.3%	188.0	23.4	87.6%
Apr-09	194.0	23.2	88.0%	161.0	21.8	86.5%
May-09	215.0	41.5	80.7%	114.0	30.8	73.0%
Jun-09	212.0	31.0	85.4%	197.0	42.0	78.7%
Jul-09	233.0	21.2	90.9%	197.0	40.0	79.7%
Aug-09	175.0	12.4	92.9%	218.0	25.2	88.4%
Sep-09	192.0	24.8	87.1%	162.0	58.0	64.2%
	BODInfl	BODEff	BOD %rem	TSS Inf	TSS Eff	TSS % rem
min	54.0	12.4	0.0%	56.4	9.4	0.0%
avg	220.6	36.5	81.2%	258.6	42.3	77.3%
max	307.0	64.7	92.9%	937.0	83.6	96.9%

Less than 85% removal

52.8%

55.6%

Buhl

	BODInfl	BODEff	BOD %rem	TSS Inf	TSS Eff	TSS % rem
Oct-06	567.8	32.5	94.3%	395.3	32.3	91.8%
Nov-06	616.6	33.2	94.6%	432.2	41.2	90.5%
Dec-06	797.3	25.3	96.8%	475.8	38.0	92.0%
Jan-07	660.0	37.6	94.3%	355.8	45.6	87.2%
Feb-07	674.3	38.8	94.2%	365.3	53.3	85.4%
Mar-07	779.5	32.5	95.8%	387.0	84.8	78.1%
Apr-07	933.3	40.5	95.7%	447.0	61.8	86.2%
May-07	728.8	39.6	94.6%	384.0	69.0	82.0%
Jun-07	704.8	17.5	97.5%	429.0	49.3	88.5%
Jul-07	561.0	22.5	96.0%	381.0	44.5	88.3%
Aug-07	514.2	27.2	94.7%	313.6	30.2	90.4%
Sep-07	580.0	12.5	97.8%	355.8	30.0	91.6%
Oct-07	559.5	13.0	97.7%	345.5	28.3	91.8%
Nov-07	662.8	39.0	94.1%	362.2	46.2	87.2%
Dec-07	472.8	37.5	92.1%	442.8	44.5	90.0%
Jan-08	625.8	59.6	90.5%	385.8	61.0	84.2%
Feb-08	882.5	73.0	91.7%	431.5	75.0	82.6%
Mar-08	657.0	54.0	91.8%	386.5	73.3	81.0%
Apr-08	1151.4	39.0	96.6%	1022.8	59.0	94.2%
May-08	688.3	25.5	96.3%	518.5	47.8	90.8%
Jun-08	586.8	20.8	96.5%	407.0	82.3	79.8%
Jul-08	446.8	26.2	94.1%	370.0	28.0	92.4%
Aug-08	556.5	28.5	94.9%	326.0	31.3	90.4%
Sep-08	643.0	36.3	94.4%	320.5	26.3	91.8%
Oct-08	604.0	29.6	95.1%	444.0	27.6	93.8%
Nov-08	620.8	32.0	94.8%	371.5	32.3	91.3%
Dec-08	765.6	29.4	96.2%	337.6	56.4	83.3%
Jan-09	635.8	49.8	92.2%	369.0	53.5	85.5%
Feb-09	671.8	47.3	93.0%	456.5	38.8	91.5%
Mar-09	1175.8	64.8	94.5%	485.8	69.3	85.7%
Apr-09	820.0	45.8	94.4%	557.4	75.6	86.4%
May-09	780.0	23.5	97.0%	361.8	64.8	82.1%
Jun-09	452.4	29.4	93.5%	313.4	41.6	86.7%
Jul-09	668.8	19.8	97.0%	460.3	23.8	94.8%
Aug-09	644.5	17.3	97.3%	373.6	23.7	93.7%
Sep-09	429.6	23.4	94.6%	329.4	15.4	95.3%
	BODInfl	BODEff	BOD %rem	TSS Inf	TSS Eff	TSS % rem
min	429.6	12.5	90.5%	313.4	15.4	78.1%
avg	675.6	34.0	94.9%	413.9	47.4	88.3%
max	1175.8	73.0	97.8%	1022.8	84.8	95.3%

Less than 85% removal

0.0%

22.2%

Driggs

	BODInfl	BODEff	BOD %rem	TSS Inf	TSS Eff	TSS % rem
Oct-06	450.0	80.0	82.2%	530.0	66.0	87.5%
Nov-06	108.0	30.0	72.2%	340.0	35.0	89.7%
Dec-06	384.0	16.0	95.8%	180.0	27.0	85.0%
Jan-07	342.0	84.0	75.4%	204.0	22.0	89.2%
Feb-07	222.0	36.0	83.8%	164.0	18.0	89.0%
Mar-07	192.0	30.0	84.4%	150.0	17.0	88.7%
Apr-07	360.0	282.0	21.7%	470.0	56.0	88.1%
May-07	810.0	39.0	95.2%	356.0	56.0	84.3%
Jun-07	1050.0	90.0	91.4%	354.0	35.0	90.1%
Jul-07	510.0	46.0	91.0%	543.0	38.0	93.0%
Aug-07	420.0	10.0	97.6%	155.0	40.0	74.2%
Sep-07	430.0	30.0	93.0%	854.0	43.0	95.0%
Oct-07	350.0	45.0	87.1%	444.0	44.0	90.1%
Nov-07	300.0	20.0	93.3%	420.0	48.0	88.6%
Dec-07	210.0	23.0	89.0%	80.0	28.0	65.0%
Jan-08	398.0	25.0	93.7%	171.0	6.0	96.5%
Feb-08	326.8	14.1	95.7%	448.9	21.0	95.3%
Mar-08	177.6	18.2	89.7%	178.6	10.0	94.4%
Apr-08	466.0	27.0	94.2%	218.0	6.0	97.2%
May-08	314.0	28.0	91.1%	237.0	36.0	84.8%
Jun-08	238.9	38.9	83.7%	80.4	22.2	72.4%
Jul-08	81.4	33.5	58.9%	67.0	40.0	40.3%
Aug-08	196.4	29.0	85.2%	45.0	9.0	80.0%
Sep-08	225.1	10.7	95.3%	62.0	24.0	61.3%
Oct-08	287.6	21.4	92.6%	221.2	38.0	82.8%
Nov-08	359.9	32.6	90.9%	314.3	41.3	86.8%
Dec-08	352.7	65.9	81.3%	318.5	27.7	91.3%
Jan-09	181.6	12.0	93.4%	289.8	13.5	95.4%
Feb-09	239.0	12.8	94.7%	253.9	25.0	90.2%
Mar-09	179.6	15.4	91.4%	123.6	19.5	84.2%
Apr-09	371.3	25.1	93.2%	253.0	15.4	93.9%
May-09			-			
Jun-09	110.7	28.6	74.1%	56.0	10.0	82.1%
Jul-09	185.0	15.7	91.5%	120.0	21.1	82.4%
Aug-09	195.6	32.0	83.6%	156.0	30.8	80.3%
Sep-09	428.1	16.7	96.1%	291.8	35.2	87.9%
	BODInfl	BODEff	BOD %rem	TSS Inf	TSS Eff	TSS % rem
min	81.4	10.0	21.7%	45.0	6.0	40.3%
avg	327.2	39.0	86.4%	261.4	29.3	85.1%
max	1050.0	282.0	97.6%	854.0	66.0	97.2%

Less than 85% removal

31.4%

37.1%

Filer

	BODInfl	BODEff	BOD %rem	TSS Inf	TSS Eff	TSS % rem
Oct-06						
Nov-06						
Dec-06						
Jan-07						
Feb-07						
Mar-07						
Apr-07						
May-07						
Jun-07						
Jul-07						
Aug-07						
Sep-07						
Oct-07						
Nov-07						
Dec-07						
Jan-08						
Feb-08	238.7	14.8	93.8%	227.5	41.2	81.9%
Mar-08	415.7	21.0	94.9%	556.9	40.0	92.8%
Apr-08						
May-08	217.8	26.0	88.1%	272.8	45.0	83.5%
Jun-08	153.5	35.0	77.2%	1130.0	31.0	97.3%
Jul-08	40.2	36.0	10.4%	259.0	54.0	79.2%
Aug-08						
Sep-08						
Oct-08						
Nov-08						
Dec-08	21.2	12.5	41.0%	27.4	16.2	40.9%
Jan-09	216.7	8.3	96.2%	285.8	8.0	97.2%
Feb-09	278.0	9.4	96.6%	422.0	14.0	96.7%
Mar-09	848.0	19.0	97.8%	1370.0	21.0	98.5%
Apr-09						
May-09						
Jun-09						
Jul-09						
Aug-09						
Sep-09						

	BODInfl	BODEff	BOD %rem	TSS Inf	TSS Eff	TSS % rem
min	21.2	8.3	10.4%	27.4	8.0	40.9%
avg	270.0	20.2	77.3%	505.7	30.0	85.3%
max	848.0	36.0	97.8%	1370.0	54.0	98.5%

Less than 85% removal

33.3%

44.4%

Fruitland - Payette River

	BODInfl	BODEff	BOD %rem	TSS Inf	TSS Eff	TSS % rem
Oct-06	105.0	5.4	94.9%	122.0	1.4	98.9%
Nov-06	113.0	4.3	96.2%	124.0	1.0	99.2%
Dec-06	121.0	5.0	95.9%	168.0	1.3	99.2%
Jan-07	137.0	10.3	92.5%	170.0	2.4	98.6%
Feb-07	149.0	10.8	92.8%	214.0	1.0	99.5%
Mar-07	125.0	8.9	92.9%	204.0	1.3	99.4%
Apr-07	154.0	5.1	96.7%	164.0	1.0	99.4%
May-07	134.0	3.3	97.5%	152.0	1.2	99.2%
Jun-07	121.0	8.4	93.1%	144.0	10.8	92.5%
Jul-07	138.0	10.5	92.4%	197.0	11.8	94.0%
Aug-07	138.0	13.2	90.4%	176.0	20.0	88.6%
Sep-07	117.0	19.3	83.5%	129.0	24.3	81.2%
Oct-07	94.0	10.2	89.1%	106.0	9.8	90.8%
Nov-07	108.0	6.5	94.0%	111.0	3.3	97.0%
Dec-07	107.0	5.4	95.0%	152.0	5.0	96.7%
Jan-08	170.0	16.4	90.4%	229.0	12.4	94.6%
Feb-08	170.0	43.0	74.7%	208.0	38.0	81.7%
Mar-08	150.0	6.9	95.4%	246.0	3.3	98.7%
Apr-08	105.0	7.9	92.5%	193.0	3.0	98.4%
May-08	124.0	22.0	82.3%	164.0	24.0	85.4%
Jun-08	166.0	25.7	84.5%	363.0	32.8	91.0%
Jul-08	183.0	14.5	92.1%	292.0	22.0	92.5%
Aug-08	124.0	8.6	93.1%	224.0	13.5	94.0%
Sep-08	115.0	6.0	94.8%	131.0	7.0	94.7%
Oct-08	119.0	2.5	97.9%	130.0	1.0	99.2%
Nov-08	116.0	2.6	97.8%	144.0	3.5	97.6%
Dec-08	123.0	6.2	95.0%	151.0	6.0	96.0%
Jan-09	121.0	7.7	93.6%	144.0	6.8	95.3%
Feb-09	162.0	7.3	95.5%	269.0	7.3	97.3%
Mar-09	111.0	3.7	96.7%	120.0	2.2	98.2%
Apr-09	106.0	6.6	93.8%	128.0	1.8	98.6%
May-09	112.0	8.3	92.6%	272.0	1.0	99.6%
Jun-09	132.0	9.1	93.1%	184.0	2.8	98.5%
Jul-09	121.0	10.7	91.2%	211.0	14.8	93.0%
Aug-09	146.0	15.6	89.3%	342.0	29.3	91.4%
Sep-09	143.0	14.5	89.9%	228.0	21.8	90.4%
	BODInfl	BODEff	BOD %rem	TSS Inf	TSS Eff	TSS % rem
min	94.0	2.5	74.7%	106.0	1.0	81.2%
avg	130.0	10.3	92.3%	186.3	9.7	95.0%
max	183.0	43.0	97.9%	363.0	38.0	99.6%

Less than 85% removal

11.1%

5.6%

Fruitland - Snake River

	BODInfl	BODEff	BOD %rem	TSS Inf	TSS Eff	TSS % rem
Oct-06	463.0	20.3	95.6%	190.0	27.4	85.6%
Nov-06	384.0	16.7	95.7%	173.0	28.5	83.5%
Dec-06	487.0	21.4	95.6%	199.0	35.0	82.4%
Jan-07	423.0	27.3	93.5%	178.0	43.8	75.4%
Feb-07	538.0	36.2	93.3%	184.0	47.0	74.5%
Mar-07	489.0	24.3	95.0%	175.0	29.5	83.1%
Apr-07	517.0	31.2	94.0%	170.0	30.5	82.1%
May-07	600.0	28.4	95.3%	157.0	39.8	74.6%
Jun-07	613.0	25.1	95.9%	172.0	43.3	74.8%
Jul-07	454.0	18.0	96.0%	178.0	28.4	84.0%
Aug-07	717.0	21.7	97.0%	178.0	21.5	87.9%
Sep-07	461.0	29.3	93.6%	141.0	31.0	78.0%
Oct-07	535.0	27.5	94.9%	146.0	37.4	74.4%
Nov-07	366.0	21.6	94.1%	143.0	40.5	71.7%
Dec-07	306.0	22.3	92.7%	150.0	43.0	71.3%
Jan-08	325.0	27.8	91.4%	180.0	31.0	82.8%
Feb-08	454.0	34.5	92.4%	150.0	42.5	71.7%
Mar-08	508.0	27.7	94.5%	155.0	36.0	76.8%
Apr-08	368.0	33.0	91.0%	157.0	23.0	85.4%
May-08	557.0	38.4	93.1%	171.0	22.5	86.8%
Jun-08	429.0	35.0	91.8%	180.0	43.0	76.1%
Jul-08	563.0	29.0	94.8%	191.0	24.4	87.2%
Aug-08	465.0	29.4	93.7%	157.0	33.5	78.7%
Sep-08	525.0	31.4	94.0%	176.0	49.6	71.8%
Oct-08	372.0	42.2	88.7%	197.0	56.8	71.2%
Nov-08	480.0	37.7	92.1%	245.0	57.0	76.7%
Dec-08	605.0	40.8	93.3%	198.0	56.6	71.4%
Jan-09	438.0	36.7	91.6%	198.0	75.0	62.1%
Feb-09	480.0	43.4	91.0%	258.0	61.5	76.2%
Mar-09	618.0	32.7	94.7%	270.0	68.0	74.8%
Apr-09	506.0	23.0	95.5%	250.0	24.8	90.1%
May-09	715.0	38.5	94.6%	153.0	23.5	84.6%
Jun-09	617.0	31.2	94.9%	168.0	23.4	86.1%
Jul-09	502.0	25.4	94.9%	174.0	16.8	90.3%
Aug-09	686.0	20.3	97.0%	171.0	14.5	91.5%
Sep-09	618.0	21.5	96.5%	157.0	15.4	90.2%
	BODInfl	BODEff	BOD %rem	TSS Inf	TSS Eff	TSS % rem
min	306.0	16.7	88.7%	141.0	14.5	62.1%
avg	505.1	29.2	94.0%	180.3	36.8	79.6%
max	717.0	43.4	97.0%	270.0	75.0	91.5%

Less than 85% removal

0.0%

72.2%

Homedale

	BODInfl	BODEff	BOD %rem	TSS Inf	TSS Eff	TSS % rem
Oct-06	58.0	25.0	56.9%	66.0	33.0	50.0%
Nov-06	351.0	35.0	90.0%	270.0	41.0	84.8%
Dec-06	140.0	45.0	67.9%	144.0	59.0	59.0%
Jan-07	1170.0	13.0	98.9%	1580.0	19.0	98.8%
Feb-07	240.0	48.0	80.0%	228.0	36.0	84.2%
Mar-07	233.0	22.0	90.6%	127.0	8.0	93.7%
Apr-07	271.0	24.0	91.1%	178.0	26.0	85.4%
May-07	158.0	6.0	96.2%	100.0	3.0	97.0%
Jun-07	200.0	6.0	97.0%	104.0	4.0	96.2%
Jul-07	193.0	8.0	95.9%	137.0	11.0	92.0%
Aug-07	147.0	20.0	86.4%	74.0	10.0	86.5%
Sep-07	443.0	31.0	93.0%	1220.0	56.0	95.4%
Oct-07	262.0	32.0	87.8%	222.0	34.0	84.7%
Nov-07	262.0	12.0	95.4%	186.0	19.0	89.8%
Dec-07	301.0	14.0	95.3%	242.0	31.0	87.2%
Jan-08	261.0	29.0	88.9%	180.0	30.0	83.3%
Feb-08	287.0	19.0	93.4%	990.0	22.0	97.8%
Mar-08	315.0	36.0	88.6%	197.0	44.0	77.7%
Apr-08	263.0	7.0	97.3%	176.0	7.0	96.0%
May-08	180.0	60.0	66.7%	128.0	90.0	29.7%
Jun-08						
Jul-08	131.0	11.0	91.6%	121.0	8.0	93.4%
Aug-08	156.0	7.0	95.5%	99.0	3.0	97.0%
Sep-08	117.0	31.0	73.5%	132.0	16.0	87.9%
Oct-08	182.0	40.0	78.0%	101.0	39.0	61.4%
Nov-08	254.0	21.0	91.7%	171.0	10.0	94.2%
Dec-08	239.0	11.0	95.4%	100.0	15.0	85.0%
Jan-09	183.0	36.0	80.3%	366.0	56.0	84.7%
Feb-09	354.0	20.0	94.4%	444.0	27.0	93.9%
Mar-09	352.0	53.0	84.9%	131.0	44.0	66.4%
Apr-09	317.0	11.0	96.5%	130.0	5.0	96.2%
May-09	372.0	18.0	95.2%	160.0	3.0	98.1%
Jun-09	235.0	24.0	89.8%	141.0	21.0	85.1%
Jul-09	206.0	9.0	95.6%	135.0	3.0	97.8%
Aug-09	108.0	8.0	92.6%	139.0	6.0	95.7%
Sep-09	88.0	24.0	72.7%	75.0	35.0	53.3%
	BODInfl	BODEff	BOD %rem	TSS Inf	TSS Eff	TSS % rem
min	58.0	6.0	56.9%	66.0	3.0	29.7%
avg	258.0	23.3	88.1%	257.0	25.0	84.5%
max	1170.0	60.0	98.9%	1580.0	90.0	98.8%

Less than 85% removal

25.0%

33.3%

Middleton

	BODInfl	BODEff	BOD %rem	TSS Inf	TSS Eff	TSS % rem
Oct-06	158.0	61.0	61.4%		53.0	
Nov-06	215.0	76.0	64.7%		93.0	
Dec-06	361.0	80.0	77.8%		62.0	
Jan-07	261.0	79.0	69.7%		63.0	
Feb-07	219.0	39.0	82.2%		23.0	
Mar-07	197.0	41.0	79.2%		46.0	
Apr-07	195.0	40.0	79.5%		58.0	
May-07	150.0	34.0	77.3%		68.0	
Jun-07	151.0	16.0	89.4%		41.0	
Jul-07	122.0	16.0	86.9%		21.0	
Aug-07	101.0	9.0	91.1%		21.0	
Sep-07	142.0	21.0	85.2%		20.0	
Oct-07	178.0	26.0	85.4%		18.0	
Nov-07	203.0	27.0	86.7%		18.0	
Dec-07	178.0	26.0	85.4%		32.0	
Jan-08	169.0	34.0	79.9%		41.0	
Feb-08	184.0	30.0	83.7%		36.0	
Mar-08	228.0	48.0	78.9%		49.0	
Apr-08	207.0	47.0	77.3%		57.0	
May-08	137.0	37.0	73.0%		37.0	
Jun-08	99.0	16.0	83.8%		35.0	
Jul-08	101.0	16.0	84.2%		53.0	
Aug-08	106.0	17.0	84.0%		28.0	
Sep-08	139.0	22.0	84.2%		22.0	
Oct-08	136.0	18.0	86.8%		24.0	
Nov-08	180.0	30.0	83.3%		19.0	
Dec-08	223.0	34.0	84.8%		27.0	
Jan-09	208.0	35.0	83.2%		36.0	
Feb-09	183.0	42.0	77.0%		49.0	
Mar-09	187.0	41.0	78.1%		52.0	
Apr-09	228.0	60.0	73.7%		37.0	
May-09	202.0	46.0	77.2%		35.0	
Jun-09	189.0	45.0	76.2%		35.0	
Jul-09	154.0	23.0	85.1%		20.0	
Aug-09	73.0	13.0	82.2%		23.0	
Sep-09	124.0	17.0	86.3%		20.0	
	BODInfl	BODEff	BOD %rem	TSS Inf	TSS Eff	TSS % rem
min	73.0	9.0	61.4%		18.0	
avg	174.7	35.1	80.7%		38.1	
max	361.0	80.0	91.1%		93.0	

Less than 85% removal

72.2%

0.0%

Parma

	BODInfl	BODEff	BOD %rem	TSS Inf	TSS Eff	TSS % rem
Oct-06	148.0	4.0	97.3%	158.0	8.0	94.9%
Nov-06	176.0	5.0	97.2%	210.0	3.0	98.6%
Dec-06	61.0	6.0	90.2%	190.0	14.0	92.6%
Jan-07	180.0	9.0	95.0%	180.0	5.0	97.2%
Feb-07	132.0	9.0	93.2%	101.0	12.0	88.1%
Mar-07	182.0	15.0	91.8%	207.0	22.0	89.4%
Apr-07	204.0	10.0	95.1%	212.0	20.0	90.6%
May-07	136.0	32.0	76.5%	198.0	59.0	70.2%
Jun-07	172.0	11.0	93.6%	173.0	26.0	85.0%
Jul-07	209.0	8.0	96.2%	262.0	10.0	96.2%
Aug-07	170.0	10.0	94.1%	216.0	3.0	98.6%
Sep-07	305.0	4.0	98.7%	408.0	15.0	96.3%
Oct-07	305.0	11.0	96.4%	164.0	13.0	92.1%
Nov-07	240.0	6.0	97.5%	180.0	13.0	92.8%
Dec-07	161.0	3.0	98.1%	182.0	3.0	98.4%
Jan-08	224.0	8.0	96.4%	218.0	15.0	93.1%
Feb-08	120.0	10.0	91.7%	128.0	3.0	97.7%
Mar-08	134.0	30.0	77.6%	122.0	30.0	75.4%
Apr-08	189.0	9.0	95.2%	222.0	14.0	93.7%
May-08	210.0	44.0	79.0%	242.0	102.0	57.9%
Jun-08	130.0	14.0	89.2%	204.0	24.0	88.2%
Jul-08	134.0	13.0	90.3%	200.0	7.0	96.5%
Aug-08	168.0	10.0	94.0%	170.0	3.0	98.2%
Sep-08	220.0	11.0	95.0%	172.0	9.0	94.8%
Oct-08	122.0	10.0	91.8%	164.0	3.0	98.2%
Nov-08	195.0	12.0	93.8%	155.0	5.0	96.8%
Dec-08	155.0	15.0	90.3%	140.0	4.0	97.1%
Jan-09	251.0	12.0	95.2%	223.0	32.0	85.7%
Feb-09	191.0	23.0	88.0%	244.0	24.0	90.2%
Mar-09	163.0	7.0	95.7%	190.0	10.0	94.7%
Apr-09	185.0	7.0	96.2%	148.0	3.0	98.0%
May-09	134.0	6.0	95.5%	131.0	5.0	96.2%
Jun-09	262.0	6.0	97.7%	75.0	4.0	94.7%
Jul-09	192.0	4.0	97.9%	204.0	11.0	94.6%
Aug-09	178.0	11.0	93.8%	170.0	3.0	98.2%
Sep-09	262.0	3.0	98.9%	172.0	3.0	98.3%
	BODInfl	BODEff	BOD %rem	TSS Inf	TSS Eff	TSS % rem
min	61.0	3.0	76.5%	75.0	3.0	57.9%
avg	183.3	11.3	93.2%	187.1	15.0	92.2%
max	305.0	44.0	98.9%	408.0	102.0	98.6%

Less than 85% removal

8.3%

11.1%

Rigby

	BODInfl	BODEff	BOD %rem	TSS Inf	TSS Eff	TSS % rem
Oct-06	208.0	4.0	98.1%	256.0	1.8	99.3%
Nov-06	240.0	5.4	97.8%	198.0	13.2	93.3%
Dec-06	195.0	6.5	96.7%	96.0	16.3	83.0%
Jan-07	180.0	37.8	79.0%	131.0	15.6	88.1%
Feb-07						
Mar-07	165.0	43.3	73.8%	188.0	23.5	87.5%
Apr-07	180.0	41.8	76.8%	247.0	31.0	87.4%
May-07	176.0	33.6	80.9%	172.0	20.0	88.4%
Jun-07	305.0	36.3	88.1%	246.0	42.3	82.8%
Jul-07	125.0	32.3	74.2%	122.0	29.5	75.8%
Aug-07	122.0	12.8	89.5%	161.0	11.8	92.7%
Sep-07	178.0	8.8	95.1%	194.0	7.0	96.4%
Oct-07	173.0	6.4	96.3%	176.0	8.2	95.3%
Nov-07	135.0	6.8	95.0%	125.0	10.8	91.4%
Dec-07	205.0	6.8	96.7%	140.0	15.3	89.1%
Jan-08	175.0	8.8	95.0%	122.0	11.6	90.5%
Feb-08	101.0	43.3	57.1%	117.0	16.8	85.6%
Mar-08	355.0	9.1	97.4%	254.0	17.1	93.3%
Apr-08	227.0	17.6	92.2%	173.0	31.7	81.7%
May-08	205.0	27.1	86.8%	157.0	34.1	78.3%
Jun-08	335.0	20.0	94.0%	261.0	29.1	88.9%
Jul-08	154.0	9.5	93.8%	144.0	8.6	94.0%
Aug-08	81.0	8.3	89.8%	71.0	4.5	93.7%
Sep-08	54.0	6.6	87.8%	71.0	6.8	90.4%
Oct-08	195.0	4.4	97.7%	173.0	3.0	98.3%
Nov-08	290.0	22.9	92.1%	166.0	13.1	92.1%
Dec-08	265.0	11.5	95.7%	438.0	12.4	97.2%
Jan-09	162.0	11.2	93.1%	200.0	15.8	92.1%
Feb-09	109.0	11.0	89.9%	111.0	18.6	83.2%
Mar-09	176.0	15.4	91.3%	95.0	17.7	81.4%
Apr-09	260.0	35.6	86.3%	186.0	40.9	78.0%
May-09	124.0	35.8	71.1%	56.0	31.2	44.3%
Jun-09	275.0	20.2	92.7%	146.0	16.2	88.9%
Jul-09	99.0	32.3	67.4%	60.0	20.5	65.8%
Aug-09	62.0	7.3	88.2%	68.0	5.5	91.9%
Sep-09	51.0	3.2	93.7%	60.0	5.6	90.7%
	BODInfl	BODEff	BOD %rem	TSS Inf	TSS Eff	TSS % rem
min	51.0	3.2	57.1%	56.0	1.8	44.3%
avg	181.2	18.4	88.3%	159.5	17.3	87.2%
max	355.0	43.3	98.1%	438.0	42.3	99.3%

Less than 85% removal

22.2%

27.8%

Riverside

	BODInfl	BODEff	BOD %rem	TSS Inf	TSS Eff	TSS % rem
Oct-06	2220.0	6.0	99.7%	2350.0		
Nov-06	2130.0	3.0	99.9%	4100.0	5.0	99.9%
Dec-06	1510.0	7.0	99.5%	1180.0	17.0	98.6%
Jan-07	2810.0	8.0	99.7%	2810.0	8.0	99.7%
Feb-07	2790.0	13.0	99.5%	9180.0	13.0	99.9%
Mar-07	3240.0	18.0	99.4%	990.0	20.0	98.0%
Apr-07	3120.0	21.3	99.3%	2720.0	18.0	99.3%
May-07	3660.0	8.3	99.8%	8700.0	7.0	99.9%
Jun-07	1260.0	23.7	98.1%	2730.0		
Jul-07	4860.0	2.0	100.0%	20500.0		
Aug-07	5130.0	3.8	99.9%	35800.0	12.0	100.0%
Sep-07	2070.0	5.6	99.7%	4820.0	14.0	99.7%
Oct-07	2870.0	8.3	99.7%	19500.0	18.0	99.9%
Nov-07	4440.0	2.7	99.9%	16600.0	10.0	99.9%
Dec-07	3510.0	3.5	99.9%	51000.0		100.0%
Jan-08	3720.0	34.6	99.1%	49700.0	15.0	100.0%
Feb-08	1850.0	10.0	99.5%	38300.0	15.0	100.0%
Mar-08	1700.0	14.0	99.2%	10730.0	34.0	99.7%
Apr-08	1800.0	11.7	99.4%	31400.0	17.0	99.9%
May-08	1005.0	4.8	99.5%	16700.0	6.0	100.0%
Jun-08	1060.0	7.5	99.3%	5790.0	7.0	99.9%
Jul-08	695.0	2.0	99.7%	1420.0		
Aug-08	625.0	12.5	98.0%	680.0	15.0	97.8%
Sep-08	315.0	13.4	95.7%	330.0	22.0	93.3%
Oct-08	1140.0	16.1	98.6%	18000.0	19.0	99.9%
Nov-08	239.0	5.1	97.9%	165.0	8.0	95.2%
Dec-08	396.0	5.8	98.5%	310.0	45.0	85.5%
Jan-09	901.0	11.8	98.7%	4240.0	10.0	99.8%
Feb-09	435.0	15.8	96.4%	490.0	14.0	97.1%
Mar-09	675.0	13.3	98.0%	920.0	22.0	97.6%
Apr-09	84.7	12.2	85.6%	108.0	12.0	88.9%
May-09	127.0	3.2	97.5%	316.0	5.0	98.4%
Jun-09	130.0	4.6	96.5%	184.0		
Jul-09	309.0	2.4	99.2%	230.0	45.0	80.4%
Aug-09	272.0	2.1	99.2%	360.0	6.0	98.3%
Sep-09	122.0	9.9	91.9%	192.0	60.0	68.8%
	BODInfl	BODEff	BOD %rem	TSS Inf	TSS Eff	TSS % rem
min	84.7	2.0	85.6%	108.0	5.0	68.8%
avg	1756.1	9.6	98.4%	10098.5	17.3	96.6%
max	5130.0	34.6	100.0%	51000.0	60.0	100.0%

Less than 85% removal

0.0%

5.6%

Salmon

	BODInfl	BODEff	BOD %rem	TSS Inf	TSS Eff	TSS % rem
Oct-06	64.0	12.0	81.3%	54.0	7.0	87.0%
Nov-06	84.0	7.0	91.7%	56.0	31.0	44.6%
Dec-06	118.0	4.0	96.6%	118.0	34.0	71.2%
Jan-07	76.0	6.0	92.1%	71.0	16.0	77.5%
Feb-07	88.0	6.0	93.2%	36.0	12.0	66.7%
Mar-07	77.0	6.0	92.2%	83.0	16.0	80.7%
Apr-07	89.0	3.0	96.6%	127.0	34.0	73.2%
May-07	90.0	6.0	93.3%	78.0	12.0	84.6%
Jun-07	50.0	3.0	94.0%	55.0	11.0	80.0%
Jul-07	65.0	4.0	93.8%	56.0	8.0	85.7%
Aug-07	103.0	7.0	93.2%	698.0	2.0	99.7%
Sep-07	84.0	3.0	96.4%	82.0	4.0	95.1%
Oct-07	99.0	3.0	97.0%	96.0	2.8	97.1%
Nov-07	109.0	3.0	97.2%	75.0	4.0	94.7%
Dec-07	108.0	4.0	96.3%	83.0	15.0	81.9%
Jan-08	116.0	5.0	95.7%	75.0	5.5	92.7%
Feb-08	141.0	6.0	95.7%	119.5	4.5	96.2%
Mar-08	110.0	6.0	94.5%	109.0	20.0	81.7%
Apr-08	126.0	5.5	95.6%	119.0	31.0	73.9%
May-08	86.0	3.8	95.6%	95.0	8.8	90.8%
Jun-08	34.5	4.0	88.4%	57.5	4.0	93.0%
Jul-08	54.0	3.8	93.1%	74.0	3.5	95.3%
Aug-08	76.0	5.0	93.4%	80.0	3.0	96.3%
Sep-08	74.3	4.3	94.3%	76.5	3.3	95.8%
Oct-08	73.5	7.0	90.5%	67.0	3.3	95.1%
Nov-08	70.5	3.3	95.4%	54.5	7.3	86.7%
Dec-08	61.8	10.0	83.8%	90.6	12.2	86.5%
Jan-09	54.0	6.0	88.9%	94.0	10.5	88.8%
Feb-09	60.3	8.8	85.5%	88.8	9.3	89.6%
Mar-09	67.4	15.4	77.2%	93.0	27.4	70.5%
Apr-09	86.6	19.0	78.1%	98.6	24.6	75.1%
May-09	68.3	25.0	63.4%	110.0	3.0	97.3%
Jun-09	28.0	8.8	68.8%	21.3	4.8	77.6%
Jul-09	45.5	6.0	86.8%	41.3	3.0	92.7%
Aug-09	19.3	5.8	70.1%	54.0	3.8	93.1%
Sep-09	46.8	4.0	91.4%	38.8	3.0	92.3%
	BODInfl	BODEff	BOD %rem	TSS Inf	TSS Eff	TSS % rem
min	19.3	3.0	63.4%	21.3	2.0	44.6%
avg	77.9	6.6	89.8%	95.1	11.2	85.6%
max	141.0	25.0	97.2%	698.0	34.0	99.7%

Less than 85% removal

19.4%

38.9%

Shelley

	BODInfl	BODEff	BOD %rem	TSS Inf	TSS Eff	TSS % rem
Oct-06	144.4	32.2	77.7%	370.4	26.2	92.9%
Nov-06	180.3	37.5	79.2%	140.0	18.5	86.8%
Dec-06	111.8	14.0	87.5%	147.8	40.0	72.9%
Jan-07	145.8	19.4	86.7%	117.2	44.8	61.8%
Feb-07	112.3	43.5	61.3%	90.5	42.5	53.0%
Mar-07	120.0	31.8	73.5%	112.8	40.3	64.3%
Apr-07	119.5	28.1	76.5%	117.5	80.0	31.9%
May-07	126.4	41.8	66.9%	83.6	44.0	47.4%
Jun-07	154.3	54.8	64.5%	95.8	68.8	28.2%
Jul-07	75.4	28.8	61.8%	57.6	35.4	38.5%
Aug-07	139.8	101.8	27.2%	79.3	42.3	46.7%
Sep-07	116.3	68.3	41.3%	89.3	53.5	40.1%
Oct-07	144.5	55.5	61.6%	86.5	30.3	65.0%
Nov-07	116.0	50.8	56.2%	100.3	14.5	85.5%
Dec-07	114.5	12.0	89.5%	85.3	13.0	84.8%
Jan-08	107.4	23.4	78.2%	121.8	24.8	79.6%
Feb-08	156.8	89.3	43.0%	135.8	31.5	76.8%
Mar-08	133.5	89.3	33.1%	108.5	29.8	72.5%
Apr-08	132.2	53.6	59.5%	134.0	26.2	80.4%
May-08	112.3	27.5	75.5%	57.3	35.8	37.5%
Jun-08	103.8	53.0	48.9%	54.4	96.0	-76.5%
Jul-08	70.7	33.0	53.3%	43.0	85.3	-98.4%
Aug-08	67.8	51.0	24.8%	47.5	54.5	-14.7%
Sep-08	134.0	40.2	70.0%	95.8	33.8	64.7%
Oct-08	112.5	24.3	78.4%	48.3	15.5	67.9%
Nov-08	144.6	50.4	65.1%	99.0	32.0	67.7%
Dec-08	93.5	55.0	41.2%	66.5	48.0	27.8%
Jan-09	123.0	112.3	8.7%	83.3	35.0	58.0%
Feb-09	195.3	134.0	31.4%	145.0	21.3	85.3%
Mar-09	126.0	115.0	8.7%	71.4	28.0	60.8%
Apr-09	215.0	54.3	74.7%	115.3	49.3	57.2%
May-09	121.0	64.8	46.4%	90.3	70.8	21.6%
Jun-09	108.8	51.5	52.7%	60.8	64.0	-5.3%
Jul-09	77.8	36.5	53.1%	46.8	77.3	-65.2%
Aug-09	69.5	59.0	15.1%	53.3	89.3	-67.5%
Sep-09	134.8	29.0	78.5%	71.0	28.8	59.4%
	BODInfl	BODEff	BOD %rem	TSS Inf	TSS Eff	TSS % rem
min	67.8	12.0	8.7%	43.0	13.0	-98.4%
avg	123.9	51.9	57.0%	97.9	43.6	41.4%
max	215.0	134.0	89.5%	370.4	96.0	92.9%

Less than 85% removal

91.7%

88.9%

St. Anthony

	BODInfl	BODEff	BOD %rem	TSS Inf	TSS Eff	TSS % rem
Oct-06	180.0	6.0	96.7%		6.0	
Nov-06	990.0	23.0	97.7%		29.0	
Dec-06	183.0	8.0	95.6%		14.0	
Jan-07	450.0	2.0	99.6%		2.0	
Feb-07	204.0	2.0	99.0%		6.0	
Mar-07	249.0	5.0	98.0%		4.0	
Apr-07	204.0	31.0	84.8%		29.0	
May-07	204.0	22.0	89.2%		17.0	
Jun-07	381.0	42.0	89.0%		19.0	
Jul-07	120.0	33.0	72.5%		31.0	
Aug-07	566.0	12.0	97.9%		13.0	
Sep-07	81.0	24.0	70.4%		62.0	
Oct-07	270.0	7.0	97.4%		11.0	
Nov-07	147.0	24.0	83.7%		3.0	
Dec-07	202.0	2.0	99.0%		4.0	
Jan-08	240.0	2.0	99.2%		2.0	
Feb-08	165.0	5.0	97.0%		4.0	
Mar-08	618.0	5.0	99.2%		4.0	
Apr-08	900.0	7.0	99.2%	205.0	6.0	97.1%
May-08	186.0	95.0	48.9%		47.0	
Jun-08	182.0	8.0	95.6%		2.0	
Jul-08	115.3	7.1	93.9%		27.0	
Aug-08	140.0	18.0	87.1%		25.0	
Sep-08	147.0	4.0	97.3%		8.0	
Oct-08	254.0	4.1	98.4%		2.6	
Nov-08	269.2	3.0	98.9%		5.0	
Dec-08	147.1	3.5	97.6%		6.1	
Jan-09	127.5	2.3	98.2%		4.0	
Feb-09	256.0	3.0	98.8%		2.0	
Mar-09	307.2	2.7	99.1%		1.5	
Apr-09	204.6	19.9	90.3%		69.4	
May-09	207.0	27.0	87.0%		48.0	
Jun-09	107.0	25.0	76.6%		18.0	
Jul-09	318.9	18.8	94.1%		17.0	
Aug-09	95.3	7.8	91.8%		2.5	
Sep-09	228.0	2.0	99.1%		4.0	
	BODInfl	BODEff	BOD %rem	TSS Inf	TSS Eff	TSS % rem
min	81.0	2.0	48.9%	205.0	1.5	
avg	267.9	14.2	92.2%	205.0	15.4	
max	990.0	95.0	99.6%	205.0	69.4	

Less than 85% removal

16.7%

0.0%

Star

	BODInfl	BODEff	BOD %rem	TSS Inf	TSS Eff	TSS % rem
Oct-06	178.0	11.0	93.8%		13.0	
Nov-06	233.0	3.0	98.7%		3.0	
Dec-06	315.0	3.0	99.0%		3.0	
Jan-07	318.0	3.0	99.1%		3.0	
Feb-07	215.0	3.0	98.6%		4.0	
Mar-07	171.0	3.0	98.2%		3.0	
Apr-07	126.0	8.0	93.7%		3.0	
May-07	95.0	9.0	90.5%		15.0	
Jun-07	87.0	10.0	88.5%		10.0	
Jul-07	89.0	9.0	89.9%		22.0	
Aug-07	59.0	9.0	84.7%		10.0	
Sep-07	77.0	12.0	84.4%		11.0	
Oct-07	94.0	8.0	91.5%		12.0	
Nov-07	151.0	7.0	95.4%		11.0	
Dec-07	153.0	4.0	97.4%		4.0	
Jan-08	156.0	9.0	94.2%		6.0	
Feb-08	105.0	8.0	92.4%		4.0	
Mar-08	135.0	11.0	91.9%		11.0	
Apr-08	118.0	8.0	93.2%		6.0	
May-08	69.0	10.0	85.5%		7.0	
Jun-08	71.0	10.0	85.9%		10.0	
Jul-08	53.0	10.0	81.1%		14.0	
Aug-08	94.0	13.0	86.2%		13.0	
Sep-08	88.0	14.0	84.1%		12.0	
Oct-08	87.0	16.0	81.6%		20.0	
Nov-08	123.0	16.0	87.0%		12.0	
Dec-08	143.0	13.0	90.9%		7.0	
Jan-09	191.0	6.0	96.9%		8.0	
Feb-09	152.0	3.0	98.0%		4.0	
Mar-09	111.0	5.0	95.5%		16.0	
Apr-09	129.0	3.0	97.7%		3.0	
May-09	130.0	4.0	96.9%		5.0	
Jun-09	133.0	10.0	92.5%		10.0	
Jul-09	139.0	16.0	88.5%		22.0	
Aug-09	108.0	7.0	93.5%		12.0	
Sep-09	118.0	9.0	92.4%		11.0	

	BODInfl	BODEff	BOD %rem	TSS Inf	TSS Eff	TSS % rem
min	53.0	3.0	81.1%		3.0	
avg	133.7	8.4	91.9%		9.4	
max	318.0	16.0	99.1%		22.0	

Less than 85% removal

13.9%

0.0%

Wilder

	BODInfl	BODEff	BOD %rem	TSS Inf	TSS Eff	TSS % rem
Oct-06	246.0	5.0	98.0%	174.0	11.0	93.7%
Nov-06	216.0	8.0	96.3%	168.0	15.0	91.1%
Dec-06	225.0	3.0	98.7%	198.0	11.0	94.4%
Jan-07	90.0	5.0	94.4%	71.0	5.0	93.0%
Feb-07	267.0	4.0	98.5%	180.0	8.0	95.6%
Mar-07	358.0	28.0	92.2%	273.0	46.0	83.2%
Apr-07	327.0	43.0	86.9%	418.0	53.0	87.3%
May-07	154.0	6.0	96.1%	224.0	8.0	96.4%
Jun-07	221.0	3.0	98.6%	155.0	6.0	96.1%
Jul-07	114.0	4.0	96.5%	82.0	6.0	92.7%
Aug-07	222.0	5.0	97.7%	126.0	6.0	95.2%
Sep-07	178.0	8.0	95.5%	93.0	14.0	84.9%
Oct-07	331.0	9.0	97.3%	134.0	13.0	90.3%
Nov-07	293.0	7.0	97.6%	180.0	40.0	77.8%
Dec-07	245.0	11.0	95.5%	176.0	17.0	90.3%
Jan-08	304.0	11.0	96.4%	200.0	12.0	94.0%
Feb-08	249.0	17.0	93.2%	90.0	25.0	72.2%
Mar-08	290.0	27.0	90.7%	148.0	19.0	87.2%
Apr-08	408.0	9.0	97.8%	214.0	8.0	96.3%
May-08	262.0	34.0	87.0%	150.0	28.0	81.3%
Jun-08	325.0	10.0	96.9%	208.0	12.0	94.2%
Jul-08	270.0	11.0	95.9%	190.0	15.0	92.1%
Aug-08	192.0	22.0	88.5%	130.0	19.0	85.4%
Sep-08	143.0	32.0	77.6%	442.0	86.0	80.5%
Oct-08	202.0	10.0	95.0%	166.0	14.0	91.6%
Nov-08	382.0	26.0	93.2%	192.0	20.0	89.6%
Dec-08	315.0	10.0	96.8%	176.0	33.0	81.3%
Jan-09	336.0	11.0	96.7%	272.0	21.0	92.3%
Feb-09	294.0	9.0	96.9%	229.0	21.0	90.8%
Mar-09	269.0	15.0	94.4%	205.0	42.0	79.5%
Apr-09	304.0	10.0	96.7%	160.0	5.0	96.9%
May-09	404.0	8.0	98.0%	205.0	21.0	89.8%
Jun-09	244.0	4.0	98.4%	158.0	3.0	98.1%
Jul-09	207.0	16.0	92.3%	204.0	10.0	95.1%
Aug-09	95.0	11.0	88.4%	64.0	11.0	82.8%
Sep-09	205.0	3.0	98.5%	250.0	9.0	96.4%
	BODInfl	BODEff	BOD %rem	TSS Inf	TSS Eff	TSS % rem
min	90.0	3.0	77.6%	64.0	3.0	72.2%
avg	255.2	12.6	94.7%	186.3	19.3	89.7%
max	408.0	43.0	98.7%	442.0	86.0	98.1%

Less than 85% removal

2.8%

25.0%